

ArcPod 15VW

15x10W VW outdoor IP66 LED wash light for exterior installations

ORDER CODE: **ARCP0D15VW**



ArcPod 15VW is a compact exterior wash fixture, featuring high-intensity light despite its small size. The unit is equipped with 15x10W VW LEDs, delivering an exceptional output over than 15'000 lumens and a wide gamut of colours and whites. The slim sizing, as well as the wide range of available optics, makes the **ArcPod 15VW** an incredibly flexible architectural fixture to complement the bigger versions in large outdoor installs as accent light or for smaller-sized projects.

MAIN FEATURES

- Tilt adjustment and multiple lens options for fine focusing
- 15x10W VW LEDs
- Compact form factor and fan-free design

TECHNICAL SPECIFICATION

LIGHT SOURCE

- Source: 15x10 W Warm White + Cold White LEDs
- Luminous flux: (15°) 8'884 lm; (15°+20°) 7'811 lm; (15°+30°) 7'846 lm; (15°+40°) 7'935 lm; (15°+60°) 7'902 lm; (15°+80°) 7'937 lm; (15°+10°x60°) 15'410 lm; (15°+30°x60°) 8667 lm @full
- Lux: (15°) 7'769 lx; (15°+20°) 1'360 lx; (15°+30°) 822 lx; (15°+40°) 409 lx; (15°+60°) 292 lx; (15°+80°) 205 lx; (15°+10°x60°) 1'126 lx; (15°+30°x60°) 517 lx @5 m full
- CRI: 81,3 @ WW; 83,9 @ CW; 86,5 @ full
- Source life expectancy: > 50.000 hrs (L70B10 @Ta 25° C / 77° F)

OPTICS

- Beam angle: 10 °
- Field angle: 20 °
- Lens diameter: 36 mm
- Additional optics: see available accessories

COLOUR SYSTEM

- Colour mixing: tunable white
- CCT: CCT control through dedicated DMX channel
- White presets: 2.700 K ~ 6.500 K
- Colour wheel: virtual colour wheel with presets
- Macros: several pre-built macros with adjustable speed

DYNAMIC EFFECTS

- Static mode: selection of static colour

BODY

- Tilt angle: 0 - 130 ° with manual regulation
- Body: sturdy die-cast aluminium body
- Body colour: RAL 7012

CONTROL

- Protocols: DMX512, RDM
- DMX channels: 1 / 2 / 3 / 5 / 11 channel
- RDM: RDM for remote monitoring and settings
- Display: user interface through DATAMASTER external coder (not included)
- Firmware upgrade: yes, via USB - DMX interface (UPBOX1) not included
- Master/Slave: for synchronised operation of more units linked in a chain

ELECTRONICS

- Dimmer: linear 0 ~ 100% electronic dimmer
- Strobe / shutter: 1 ~ 30 Hz, electronic
- Operating temperature: -20° C / +45° C (-4° F / +113° F)
- LED Control: flicker free frequency with adjustable PWM
- Selectable PWM: 600 ~ 25.000 Hz

ELECTRICAL

- Mains power supply: 100-240V - 50/60Hz
- Max power consumption: 145 W
- Output (at 230V): 14 units on a single power line
- Power factor: >0,97

PHYSICAL

- IP rating: 66 for outdoor installations
- IK rating: 08
- Cooling: passive cooling and fan-free
- Adaptors: XLR and BARE END 16A adaptors included
- Signal connection: moulded IP signal IN/OUT connectors
- Power connection: moulded IP power IN/OUT connectors
- Dimensions (WxHxD): 307x259x83 mm
- Weight: 6,3 kg

CERTIFICATIONS / APPROVALS

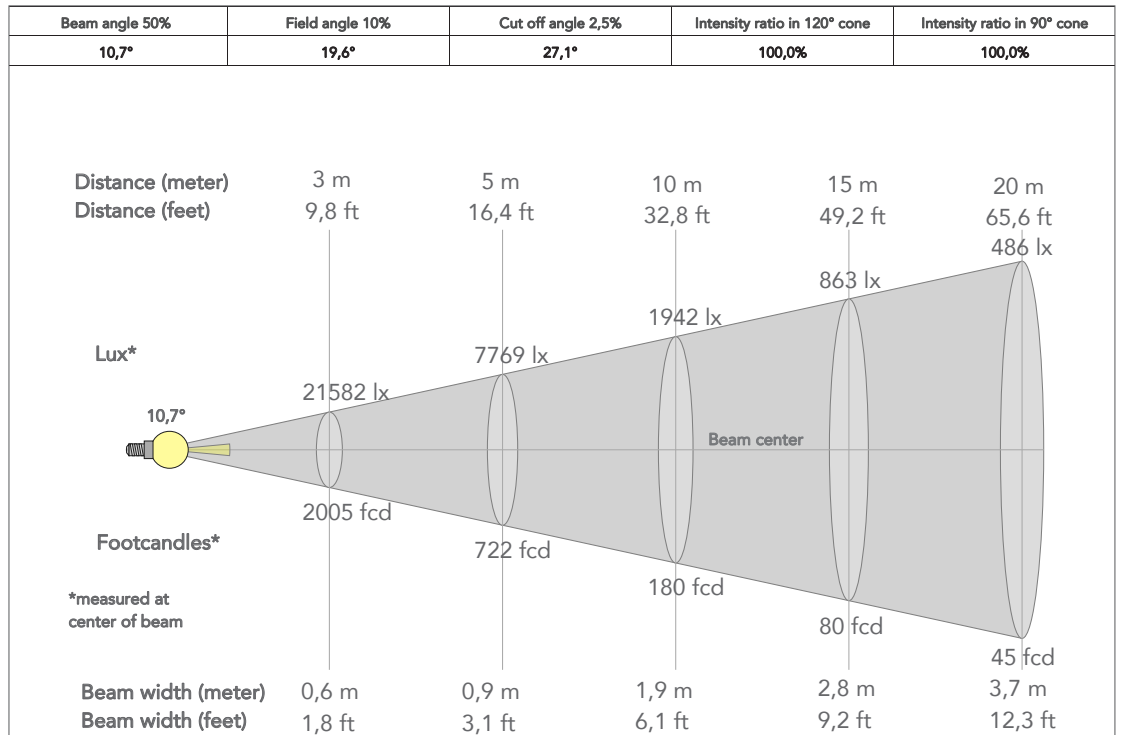
- Certifications / Approvals: CE, UKCA, RCM, cTUVus, FCC

ACCESSORIES & RELATED PRODUCTS

▪ AWEXDC1221ADP	Signal adapter kit from AWEXDC1 series to AWEXDC2 series and vice versa	▪ S27QLENS10/15/25/45	10°/15°/25°/45° lens for SOLAR27Q, ARCP0D27Q, SOLAR48Q, ARCP0D48Q, ARCP0D15Q and ARCP0D96Q
▪ AWEXAC12ADP	Power adapter from AWEXAC1 cable series to AWEXAC2 cable series	▪ A15QBD	Black barn door 4 directional flaps to adjust the light beam, ARCP0D15Q
▪ C6002B	Slim aluminum clamp, 200kg loading, 48-51mm tubes, M10 bolt, Black	▪ DATAMASTER	RDM/DMX tool, cable tester, 5p XLR connectors, pouch, charging cable, XLR adaptors
▪ RSR0630B	Steel security cable for hanging bodies, inox steel shackle, L=60 cm, black	▪ AWEXAC1L03/05/10/20	IP67 power extension cable for outdoor architectural projectors, L03/05/10/20 m
▪ A15QFILTER20 30/40/60/80	20°/30°/40°/60°/80° symmetric light diffusion filter for ARCP0D15Q, 11,4x18,6 cm	▪ AWEXDC1L03/05/10/20	IP67 DMX extension cable for outdoor architectural projectors, L03/05/10/20 m
▪ A15QFILTER1090/1060 3060/9010/6010/6030	10°x90°/10°x60°/30°x60°/90°x10°/60°x10°/60°x30° asymmetric light diffusion filter for ARCP0D15Q, 11,4x18,6 cm	▪ UPBOX1U	Firmware uploader kit, USB IN, 3pin XLR DMX OUT, USB OUT

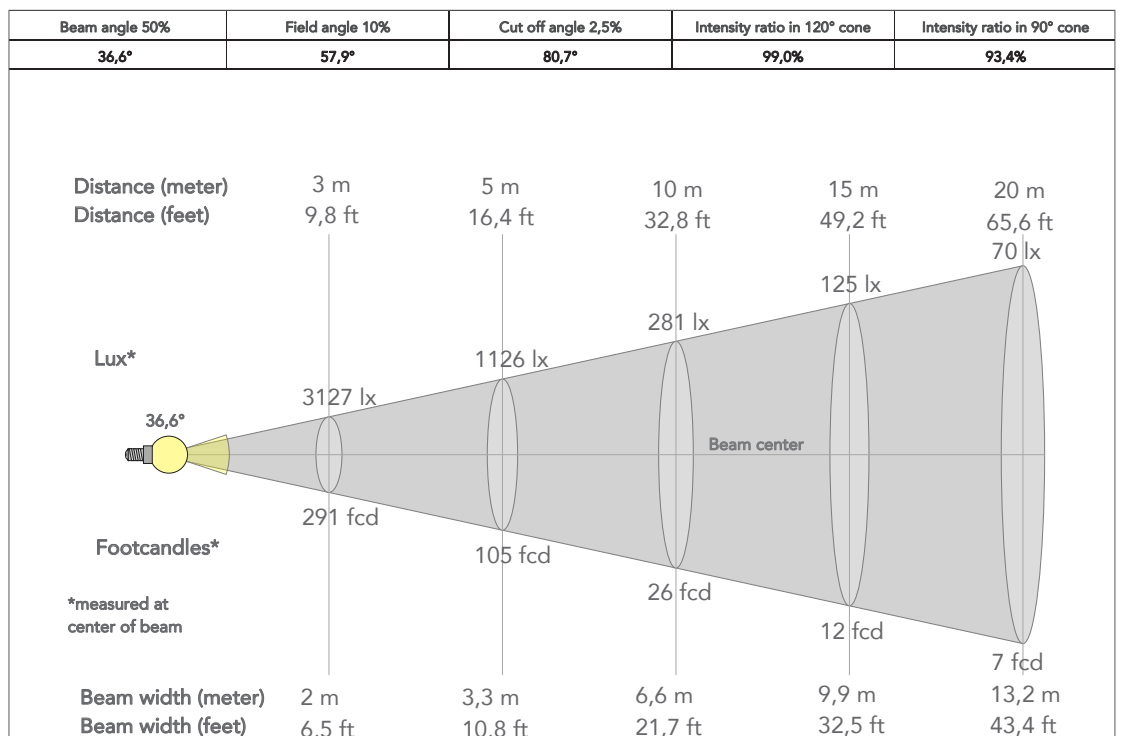
PRESET FULL ON

Beam angle 50%: 15°

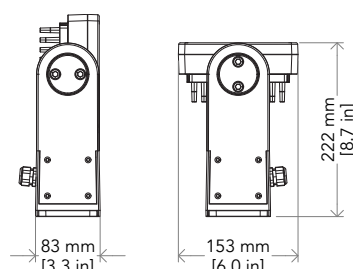
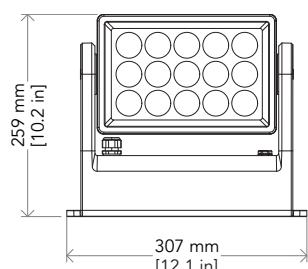


PRESET FULL ON (10°x60°)

Beam angle 50%: 15°



TECHICAL DRAWINGS



CERTIFICATIONS / APPROVALS



Conforms to UL STD. 1573
Certified to CSA STD: C22.2 NO. 166

Visit our website
for specifications and
tech documentations

