

Lumipix 15IP

15x10W outdoor linear pixel batten

ORDER CODE: **LUMIPIX15IP**



Lumipix 15IP is a tour-ready LED pixel batten conceived to be fully versatile and perform outdoor, delivering advanced brightness and colour mixing by offering individual pixel control of each cell. The robust die-cast aluminium structure with omega quick lock socket on the bracket and the waterproof power and signal connector make **Lumipix 15IP** suitable for the most demanding environments.

MAIN FEATURES

- LED batten with 15 individually controllable RGBW LED
- Waterproof housing and connections for outdoor usage
- Extensive colour palette with precise mixing and powerful output



TECHNICAL SPECIFICATION

LIGHT SOURCE

- Source: 15x10W RGBW LEDs
- Luminous flux: (16° + diffused) 4'983 lm - (16°) 5'394lm @full
- Lux: (16° + diffused) 1'886 lm - (16°) 2'454lx @5 m full
- Source life expectancy: > 30.000 h

OPTICS

- Beam angle: 16°
- Field angle: 31°
- Additional optics: magnetic frost holder on board

COLOUR SYSTEM

- Colour mixing: RGBW / FC
- CCT: CCT control through dedicated DMX channel
- White presets: 2.800 K - 10.000K
- Colour wheel: virtual colour wheel with macros
- Macros: several pre-built pixel macros with adjustable speed

DYNAMIC EFFECTS

- Pixel patterns: pre-programmed dynamic and static patterns
- Static mode: selection of static colour
- Manual mode: manual adjustment of colour

BODY

- Hardware on-board: sockets for quick-Lock Omega bracket (clamp included)
- Body: sturdy die-cast aluminium body
- Body colour: black

CONTROL

- Protocols: DMX512
- DMX channels: 4 / 6 / 10 / 60 / 65channel
- Pixel control: pixel2pixel control
- Wireless Control: included, wireless solution receiver
- Display: Graphic User Interface
- Firmware upgrade: yes, via USB - DMX interface (UPBOX1) not

included

- Master/Slave: for synchronised operation of more units linked in a chain

ELECTRONICS

- Dimmer: linear 0 ~ 100% electronic dimmer
- Dimmer curves: 4 selectable dimming modes available
- Strobe / shutter: 0 ~ 30 Hz, electronic
- Display battery: self-charging battery backup
- Operating temperature: -10° ~ +45°

ELECTRICAL

- Mains power supply: 100-240V - 50/60Hz
- Max power consumption: 161W
- Max power consumption (at 120V): 162W
- Output (at 230V): 23 units on a single power line
- Output (at 120V): 12 units on a single power line

PHYSICAL

- IP rating: 65 for temporary outdoor application, not for fixed installation
- Cooling: passive cooling and fan-free
- Suspension and fixing: double hanging bracket suitable for safe hanging and for floor positioning
- Signal connection: Seetronic XLR 5p IN/OUT connectors
- Data connection: W-DMX receiver
- Power connection: Seetronic powerCON waterproof IN/OUT connectors
- Dimensions (WxHxD): 992x206x160mm
- Weight: 8,6kg

CERTIFICATIONS / APPROVALS

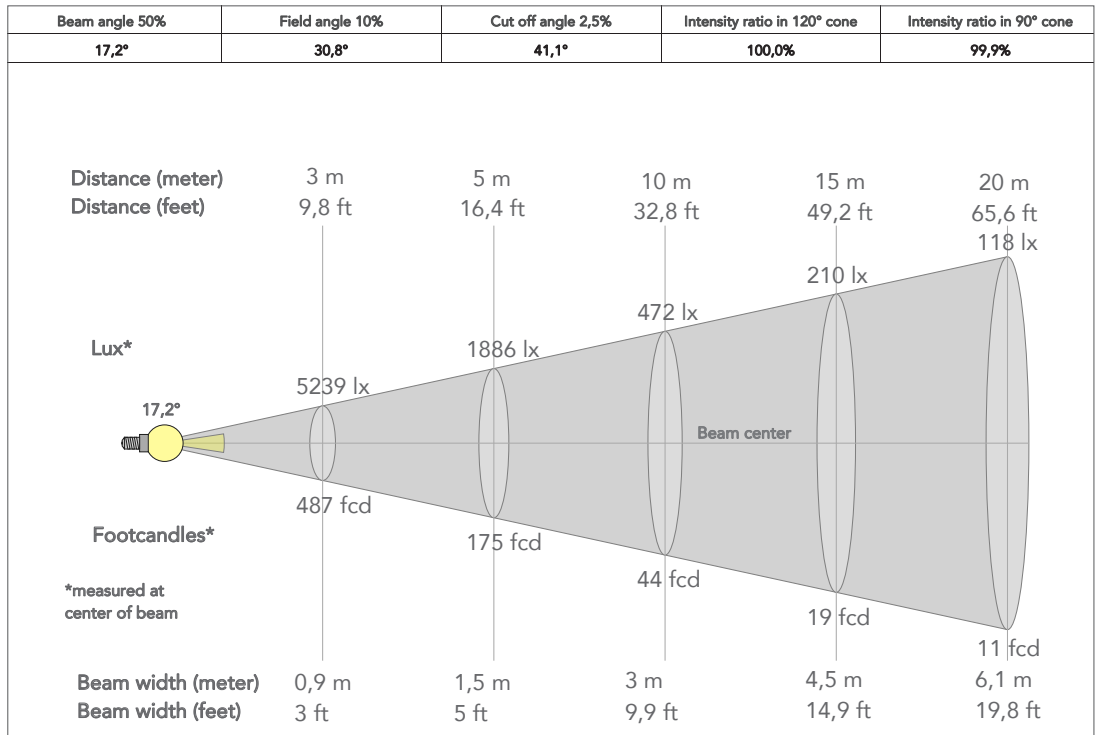
- Certifications / Approvals: CE, UKCA, RCM

ACCESSORIES & RELATED PRODUCTS

▪ 9313FXWL03	Ass. 3x2.5mm TH07 cable, 16A 3p 230V CEE plug, SETSAC3FX socket, L.3 m	▪ WSBBF1G5	BlackBox F-1 G5 transmitter, 2,45GHz & 5.2/5,8 GHz, DMX/RDM, 512Ch
▪ 9333FXWL03	Ass. 3x2.5mm TH07 cable, SHUKO plug, SETSAC3FX socket, L.3m	▪ WSBBF1G6	BlackBox F-1 G6 transrec, 512ch, 2.45GHz, DMX&RDM,Bluetooth,G3,G4,G4S, G5, CRMX
▪ 938225L03	3x2.5mm TH07 Cable, 16A SETSAC3MX, 16A SETSAC3FX, L. 3m	▪ WSBRR512G5	BlackBox R-512 G5 receiver 512Ch, 2.45GHz & 5.8GHz, DMX/RDM optional
▪ C6002B	Slim aluminum clamp, 200kg loading, 48-51mm tubes, M10 bolt, Black	▪ WSBRR512G6	BlackBox R-512 G6 receiver 512Ch, 2.45GHz,DMX&RDM,BI ueetooth,G3,G4,G4S,G5,CRMX
▪ INF53415L03	Dmx cable HC5340. SETMC5MXXB XLR 5p->SETMC5FXXB XLR (f) 5p L.3m	▪ UPBOX1U	Firmware uploader kit, USB IN, 3pin XLR DMX OUT, USB OUT
▪ OS25	Quick-Lock omega bracket	▪ LP15IPFILTER30	30° simmetric light diffuser filter for LUMIPIX15IP
▪ RSR0630B	Steel security cable for hanging bodies, inox steel shackle, L=60 cm, black	▪ LP15IPFILTER6010	60x10° asimmetric light diffuser filter for LUMIPIX15IP
		▪ LP15IPFILTER7545	75x45° asimmetric light diffuser filter for LUMIPIX15IP

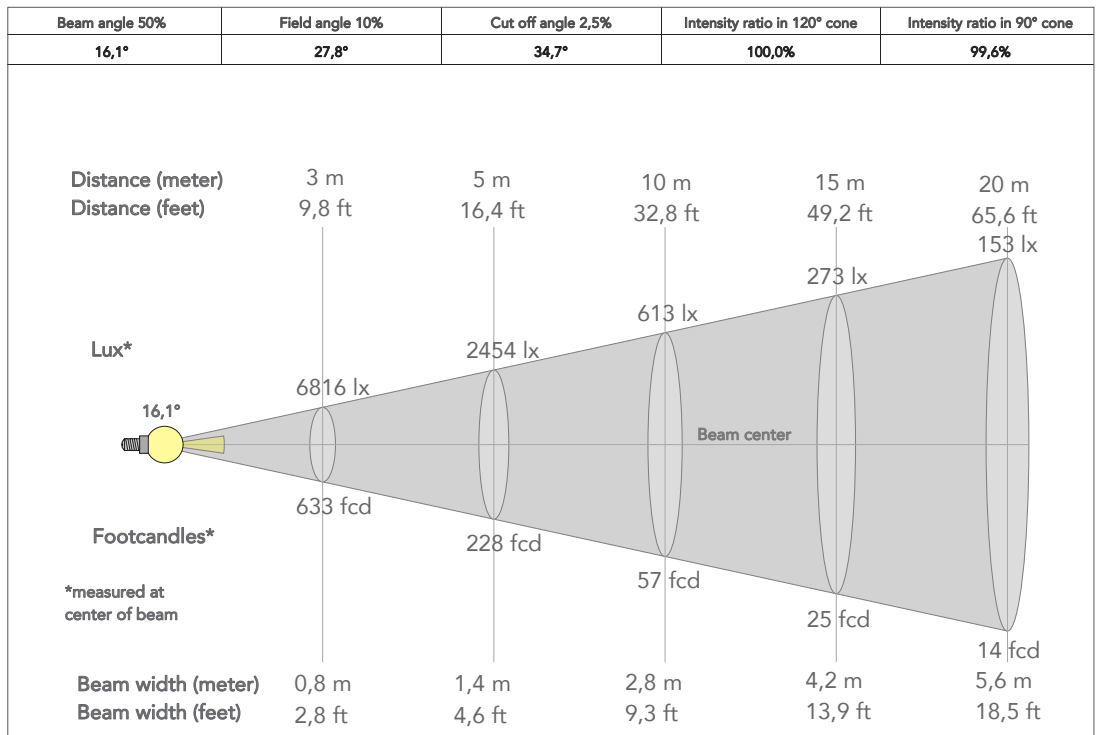
PRESET FULL ON

Beam angle 50%: 16° diffused

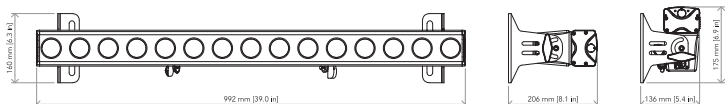


PRESET FULL ON

Beam angle 50%: 16°



TECHICAL DRAWINGS



CERTIFICATIONS / APPROVALS



Visit our website for specifications and tech documentations