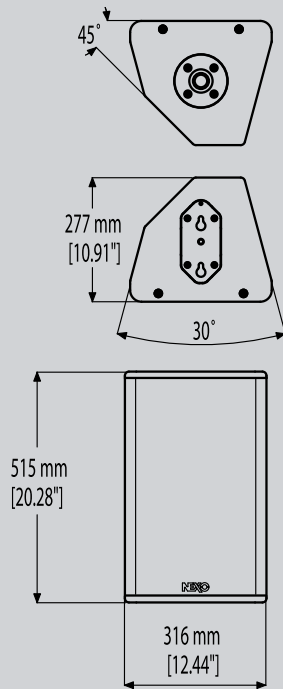


# PS10-R2 Loudspeaker

# NEXO

# PS 10



## Key Features

- High-power system (132dB Peak SPL@1m) with 10in LF and 1in HF drivers.
- Rotatable asymmetrical horn and unique cabinet architecture ensure versatility.
- User-adaptable for both PA and stage monitoring applications.
- Two-way passive 8Ω design uses a single amplifier channel for simpler installation and lower cost.
- Sophisticated control electronics ensure reliable, linear operation.
- Supported with a full range of mounting and flying accessories.

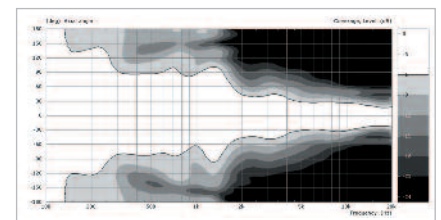
## System Applications

- Touring, installed PA for clubs, A/V, theatre, broadcast, Houses of Worship, etc. High-quality stage monitoring for cabarets A/V, theatre, broadcast, etc.
- Fill-in system for use with larger NEXO PS/Alpha systems, or any application needing exceptional side, down and near-field augmentation.

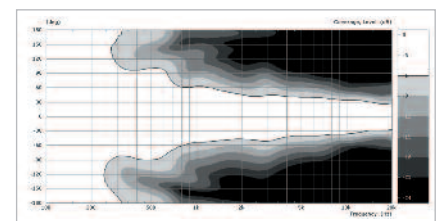


A high power system capable of producing 132 dB Peak SPL, the new PS10-R2 Loudspeaker can be safely driven with up to 1250 Watts of amplifier power. Controlled by the new, dedicated PS10 TDController-R2, or the NXAMP Powered Controller, the PS10-R2 achieves high SPLs and wide bandwidth performance, despite being only half the weight and volume of common trapezoidal loudspeaker systems.

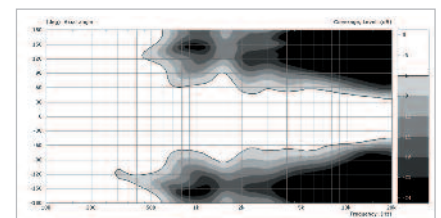
Along with the flexible coverage patterns enabled by NEXO's proprietary constant directivity asymmetrical dispersion horn, the architecture and weight balance of the PS10-R2 are designed to provide both uncompromised PA and stage monitor performance from a single speaker. Left and Right versions of the PS10-R2 have been developed to provide a true stereo image – particularly important for wedge applications. The 2-way passive 8Ω design uses a single amplifier channel to deliver bi-amped performance, reducing system cost, size and complexity, while the new cabinet design incorporates a pole mount and a new hardware adapter compatible with a vast array of touring and fixed installation accessories.



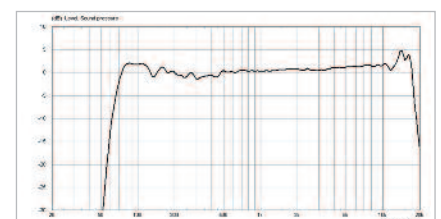
PS10-R2 horizontal coverage, +25°



PS10-R2 horizontal coverage, 0°



PS10-R2 horizontal coverage, -25°



PS10-R2 response

# NEXO

www.nexo.fr

# PS10-R2 Loudspeaker

# NEXO

# PS10



NEXO is one of the world's leading sound reinforcement loudspeaker manufacturers. Founded in 1979, the company is dedicated to crafting practical solutions with solid engineering. Each new design begins with a proprietary sophisticated computer simulation process that allows every parameter to be extensively modeled and simulated, leading to breakthrough cost and performance gains. NEXO's comprehensive product line includes loudspeakers, analogue and digital control electronics and amplification; all designed to deliver consistent sound quality and long term reliability for a broad range of applications.

NEXO S.A.  
Parc d'Activité  
du Pré de la Dame Jeanne  
B.P. 5  
60128 PLAILLY  
Tel: +33 (0) 3 44 99 00 70  
Fax: +33 (0) 3 44 99 00 30  
e-mail: info@nexo.fr

NEXO LatAM  
C.C. No 33. Suc 49  
Caballito (1449)  
Buenos Aires  
Argentina  
Tel: +54 114 432 1911  
Fax: +54 114 431 1007  
e-mail: info@nexo.fr

NEXO Asia  
GPO Box 806  
Hong Kong  
SAR China  
Tel: +852 9096 3472  
Fax: +852 2104 3214  
e-mail: info@nexo.fr

**NEXO**  
www.nexo.fr

## PS10-R2 LOUDSPEAKER PRODUCT FEATURES

Components	1 x 10" (25cm) Shielded Neodymium 8Ω driver. HF 1 x 1" throat driver + Low Distortion Constant Directivity Asymmetrical Dispersion Horn.
Height x Width x Depth	515mm x 316mm x 277 mm (20.28" x 12.44" x 10.91")
Weight	14 kg (31 lbs).
Connectors	2 x NL4MP Speakon 4 pole.
Construction	Baltic Birch Ply finished with textured black coating.
Fittings	2 Metal recessed pockets.
Front finish	Moulded Dark Grey Metal Grill.
Flying Points	One plate connecting with external accessories.
Stand fittings	Built in Steel Stand Fitting, (35mm / 1 3/8").

## SYSTEM SPECIFICATIONS PS10-R2 with PS10 TDController-R2

Frequency Response [a]	65 Hz - 20 kHz ±3dB.
Usable Range @-6dB [a]	58 Hz - 21 kHz.
Sensitivity 1W @ 1m [b]	99 dB SPL Nominal - 97 dB SPL Wideband.
Nominal Peak SPL @ 1m [b]	129 to 132 dB Peak.
HF Dispersion [c]	50° to 100° Hor. x 55° Vert. Rotatable Horn, 4 positions.
Directivity Q & DI [c]	Q : 16 Nominal DI : 12 dB Nominal. ( f > 3 kHz )
Crossover Frequencies	2 kHz Passive.
Nominal Impedance	8Ω
Recommended Amplifiers	500 to 1250 W / 8 Ω.

## SYSTEM OPERATIONS

Electronic Controller	The PS10 TDController-R2 is precisely matched to the PS10-R2 & LS600 cabinets and includes sophisticated protection systems. Using PS10-R2 & LS600 without a properly connected PS10 TDController-R2 will result in poor sound quality and can damage the components.
Dispersion configuration	After dismounting front grill from its fixings, the HF Horn can be rotated in 4 positions for dispersion configuration.
Sub-bass	The PS10-R2 can be used without optional LS600 Sub-Bass. Active two-way operation with the LS600 is included in the PS10 TDController-R2. One LS600 matches 2 x PS10-R2, additional LS600 may be used for enhanced LF capability.
Speaker Cables	PS10-R2 are wired 2- & 2+ on Speakon connectors, LS600 on 1- & 1+. Loop through Speakons are present on both. Single identical cables can thus be used to loop through combinations of up to 2 x PS10-R2 & 1 x LS600 in no particular order.

## SHIPPING & ORDERING SPECIFICATIONS

Packaging	PS10-R2 is packaged as a single product.
Shipping Weight & Volume	17.3 kg (38 lbs) / 0.169 cubic metres (5.96 cubic feet).
Accessories	A full selection of mounting Accessories is available, please contact your Nexo Agent for details.

As part of a policy of continual improvement, NEXO reserves the right to change specifications without notice.

[a] Response curves & data : Anechoic Far Field for the PS10-R2 + PS10TDController-R2. Half-Space Anechoic radiation for the LS600 + PS10 TDController-R2.

[b] Sensitivity & Peak SPL data : these will depend on spectral distribution and crest factor of program material. Measured with band limited Pink Noise. Nominal refers to Voice Decade (300 Hz - 3 kHz), Wideband to the specified ±3dB range. Data are for speaker + processor + recommended amplifier combinations.

Peak SPL is at clipping of recommended amplifier.

[c] Directivity curves & data : obtained by computer treatment on off axis response curves.  
E&OE September 2009.

## Architectural and Engineering Specifications

The 2-way loudspeaker system shall have one 10 inch shielded Neodymium 8Ω cone transducer and a 1 inch compression driver on a low distortion constant directivity asymmetrical dispersion horn. The system's horizontal coverage shall range from 50° to 100°, with vertical coverage of +25° and -30°. The user shall be able to rotate the horn in 4 directions as required by the application. The system shall have a Q of 16 and a Directivity Index that is 12 at frequencies above 3kHz. Nominal Sensitivity shall be 99dB (97dB wideband). When driven by a NXAMP 4x1, NXAMP 4x4 a PS10 TDController-R2 or by a NX242 properly-connected to amplification capable of delivering 500 to 1250 Watts into an 8Ω (nominal) load the system shall be capable of 129dB to 132dB peak SPL, with a frequency response of 65Hz to 20kHz ±3dB (58Hz to 21Hz -6dB). The system shall include an internal passive crossover. Electrical connections shall be made via one of the two 4-pole NL4MP SPEAKON connectors.

The system shall have a tuned ported multi-angle enclosure constructed of 18ply Baltic birch, finished in either black or white textured coating and having exterior dimensions no greater than 515mm H x 316mm W x 277mm D (20.28 inches H x 12.4 inches W x 10.9 inches D); the system shall weigh 14 kg (31 lbs). Exterior hardware shall include 1 metal plate, 2 attachment points and 1-pole socket. Interior components shall be protected by a powder coated perforated steel grille. The system shall be the PS10-R2 with either, a PS10 TDController-R2, NXAMP 4x1, NXAMP 4x4 or NX242.

## LIMITED WARRANTY

NEXO loudspeakers and electronics are covered against defects in workmanship or materials for a period of two (2) years from the original date of purchase. At the option of NEXO the defective item will be repaired/replaced with no charge for materials/labour. The item is to be adequately packaged and dispatched, pre-paid, to a NEXO authorised distributor/service centre. Unauthorised repair shall void the warranty. The NEXO warranty does not cover cosmetics or finish and does not apply to any items which in NEXO's opinion have failed due to used abuse, accidents, modifications or any type of misuse. All images and text herein are the property of NEXO SA, and deemed accurate, although specifications are subject to change without notice.