



Chroma-Q™ Color Force™ 48 RGBA LED Fixture

**Part No:
CHCF48NFRGBA**

S P E C I F I C A T I O N S H E E T

V 1.3

DESCRIPTION

The fixture shall provide a very powerful 8,000 hot lumens output for washing areas up to 5m / 17ft high.
The fixture shall be suitable for creating a wide range of cyclorama flood, border, wall wash, effects and feature lighting applications in the entertainment and architectural sectors.
The fixture shall provide RGBA colour mixing.
The fixture shall provide a high CRI of 92.
The fixture shall provide a smooth, linear dimming curve.
The fixture shall offer a choice of HSI, Fx HSI, RGB, RGBA, RGB (*Magic Amber™) and sRGBI (Magic Amber) control modes.
The fixture shall feature a built-in stand-alone mode with real-time triggering.
The fixture shall feature a built-in power supply.
The fixture shall be manufactured from extruded material.

FEATURES

- Create a wide range of cyclorama flood, border, wall wash, effects and feature lighting applications in the entertainment and architectural sectors.
- 8,000 hot lumens output easily washes 8m / 26 foot.
- Extremely smooth, uniform wash.
- RGBA colour mixing.
- Radically increased colour palette.
- High CRI of 92.
- Theatrical grade dimming.
- Rugged extruded aluminium body.
- Built-in power supply.
- Hidden fixing and cable management for seamless wall washing and fast deployment.
- Perfect for theatre, TV, concert touring, exhibitions and corporate events.
- Optional 'Cyc' and 'Border' lens media accessories available.

OVERALL SPECIFICATIONS

Net dimensions:	Width: 1,180mm / 46.5" Height: 180mm / 7" Depth: 177mm / 7"
Net weight:	15kg / 33lb
Shipping dimensions:	Width: 1,295mm / 51" Height: 305mm / 12" Depth: 320mm / 12.5"
Shipping weight:	18kg / 40lb
Power input rating:	100-240V AC, 50-60Hz, 480W
Power connector in/out:	PowerCon
Data connectors in/out:	XLR 5-pin
Control protocol:	ANSI E1.1 DMX-512A
Cooling system:	Forced - 2x fans
Construction:	Anodised aluminium extrusion
Colour:	Black
LED cells:	8
LEDs per cell:	24 (6 x RGBA)

* Magic Amber is the term used for the unit's ability to bring in amber when mixing colours that require it.

OVERALL SPECIFICATIONS cont.

Total LEDs:	192
Control modes:	31 channels Fx HSI 24 channels HSI 24 channels RGB (Magic Amber) 32 channels RGBA 33 channels sRGBI (Magic Amber) 9 channels Fx HSI 3 channels HSI 3 channels RGB 4 channels RGBA 5 channels sRGBI (Magic Amber) 1 channel DMX Look Select
Dimming curve:	Theatrical
Variable effects engine:	Yes
Effects parameters:	Grouping, colour speed, colour fan, colour range, colour step, intensity effects and intensity fan
Hot lumen output:	White 8,000 hot lumen (prelim)
CRI:	92
Optics:	Specialised close focus lens
Beam angle:	23° (approx.)
Beam angle with optional Cyc lens:	80 x 30° (approx.)
Beam angle with optional Border lens:	60° (approx.)
Beam dispersion:	Symmetrical direct illumination
CCT:	Adjustable 1,000 – 10,000K
Lamp life:	L70 up to 50,000 hours
IP rating:	IP20
Built-in hardware:	Quick release lever for tilt adjustment
Approvals:	Pending for EN55103-1 & 2, IEC60950

ORDERING INFORMATION

Model	Part No
Chroma-Q Color Force 48 RGBA body finished in black	CHCF48NFRGBA
Chroma-Q Color Force 48 c/w Border lens, RGBA body finished in black	CHCF48BDRRGBA
Chroma-Q Color Force 48 c/w Cyc lens, RGBA body finished in black	CHCF48CYCRGBA

ACCESSORIES

Model	Part No
Chroma-Q Border lens for Color Force 48	CHCFBL48
Chroma-Q Cyc lens for Color Force 48	CHCFCL48



www.chroma-q.com



HQ, UK & International Sales
A.C. Entertainment Technologies Ltd.
Tel: +44 (0)1494 446000
Fax: +44 (0)1494 461024
sales@ac-et.com
www.ac-et.com

Northern UK Sales
A.C. Entertainment Technologies Ltd.
Tel: 0113 255 7666
Fax: 0113 255 7676
acnorth@ac-et.com
www.ac-et.com

North American Sales
A.C. Lighting Inc.
Tel: 416-255-9494
Fax: 416-255-3514
northamerica@aclighting.com
www.aclighting.com

Asian Sales
A.C. Lighting Asia KK
Tel: +81 (0)48-475-9377
Fax: +81 (0)48-475-9355
sales@aclighting.jp
www.aclighting.jp

All Chroma-Q LED products are licensed by Color Kinetics. Chroma-Q and all associated product names are recognised trademarks, for more information visit www.chroma-q.com/trademarks. The rights and ownership of all trademarks are recognised. The information contained herein is correct at the time of printing, however as we are constantly refining our product range we reserve the right to change the specification without notice. EGOE.



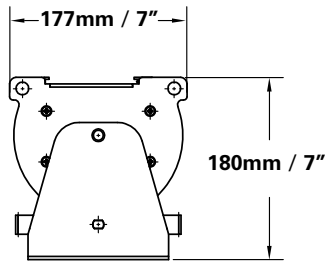
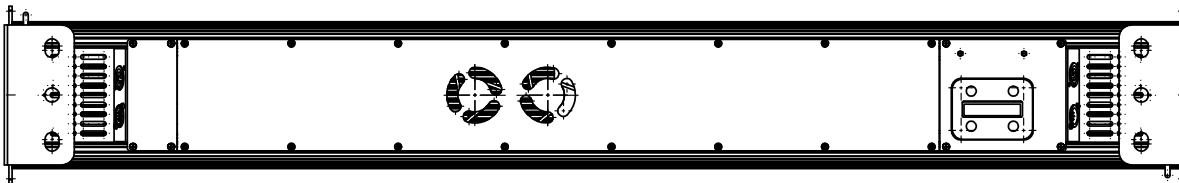
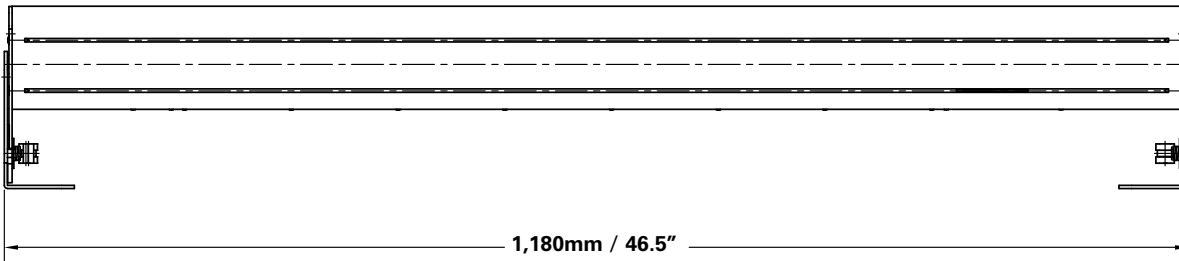
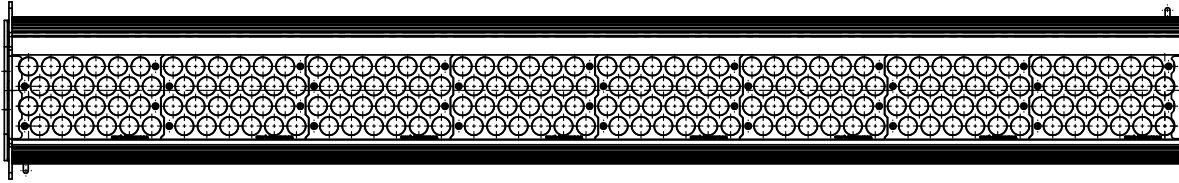
**Chroma-Q™ Color Force™ 48
RGBA LED Fixture**

**Part No:
CHCF48NFRGBA**

S P E C I F I C A T I O N S H E E T

V 1.3

Dimensions



* Magic Amber is the term used for the unit's ability to bring in amber when mixing colours that require it.

www.chroma-q.com



HQ, UK & International Sales
A.C. Entertainment Technologies Ltd.
Tel: +44 (0)1494 446000
Fax: +44 (0)1494 461024
sales@ac-et.com
www.ac-et.com

Northern UK Sales
A.C. Entertainment Technologies Ltd.
Tel: 0113 255 7666
Fax: 0113 255 7676
acnorth@ac-et.com
www.ac-et.com

North American Sales
A.C. Lighting Inc.
Tel: 416-255-9494
Fax: 416-255-3514
northamerica@aclighting.com
www.aclighting.com

Asian Sales
A.C. Lighting Asia KK
Tel: +81 (0)48-475-9377
Fax: +81 (0)48-475-9355
sales@aclighting.jp
www.aclighting.jp

All Chroma-Q LED products are licensed by Color Kinetics. Chroma-Q and all associated product names are recognised trademarks, for more information visit www.chroma-q.com/trademarks. The rights and ownership of all trademarks are recognised. The information contained herein is correct at the time of printing, however as we are constantly refining our product range we reserve the right to change the specification without notice. EGOE.