



# Chroma-Q™ Color Block 2™ LED Fixture

**Part No:  
CHCB4M2**

## S P E C I F I C A T I O N S H E E T

**V 1.3**

### DESCRIPTION

The fixture shall provide 4 single optic colour mixing RGBA LED cells. Each cell of the fixture shall provide a single colour optic across the spectrum.

The fixture shall provide a very efficient light output of around 530 Lumens and a CRI of 90.

The fixture shall offer a choice of HSI, RGBA, RGB (\*Magic Amber™) and RGBI (\*Magic Amber) control modes.

The fixture shall offer a full range of fixing accessories for wall, floor, truss, stand and vertical hanging units.

The fixture unit shall be suitable for creating a wide range of fixture configurations - e.g. battens, blinders, footlights, side fills, cyclorama floods, truss toners, discreet set piece lighting and interior architectural lighting.

The fixture shall feature a built-in stand-alone mode with real-time triggering.

The fixture shall have a powerful variable effects engine (V<sup>2</sup> technology).

The fixture shall be manufactured from extruded lightweight material.

### FEATURES

- CRI of 90 - for tungsten emulation.
- Enhanced colour range - create subtle theatrical hues.
- Single colour diffused optics virtually eliminate multicoloured shadows & offer camera friendly output.
- Exceptional colour brightness & light output levels.
- Advanced beam spreading technology - even colour mix across the beam.
- High quality of colour depth, superior colour rendition & a warmer colour range.
- All-purpose design - create custom LED lighting solutions for a wide variety of applications - e.g. touring, rental, TV, theatre, tradeshow & indoor architectural - using stock of one generic fixture.
- Modular construction with range of fixing accessories - easily configured as a wide variety of shapes.
- Broad choice of effects lighting options - e.g. battens, blinders, footlights, side fills, cyclorama floods, truss toners etc.
- Comprehensive range of fixing accessories available - for wall, floor, truss, stand & vertical hanging.
- HSI (Hue, Saturation & Intensity), RGBA, RGB (\*Magic Amber) & RGBI (\*Magic Amber) control - to enhance colour adjustment & easier control of light output.
- Variable Effects Engine (V<sup>2</sup> technology) - choice of dynamic colour & effects parameters.
- Heavy gauge anodised aluminium extrusion - lightweight but extremely robust.
- Additional protection around the lenses - for a truly road-proof fixture.
- Slimline design with cable management - perfect for discreet installation.
- Active cooling system - safe, efficient & optimal operation in most conditions.

\* Magic Amber is the term used for the unit's ability to bring in amber when mixing colours that require it.

### FEATURES cont.

- Lamp life of up to 25,000 hours - very low maintenance & cost of ownership.
- Choice of 5 unit & 30 unit power supplies - to suit smaller & larger systems.

### OVERALL SPECIFICATIONS

Net dimensions (without fixings):	Width (A): 250mm / 9.8" Height (B): 62mm / 2.4" Depth (C): 119mm / 4.7"
Net weight:	1.3kg / 2.8lbs
Shipping dimensions:	Width: 267mm / 10.5" Height: 76mm / 3" Depth: 127mm / 5"
Shipping weight:	1.3kg / 3lbs
Power consumption:	See power supply specification sheets
Power input rating:	48V DC
Control protocol:	ANSI E1.1 DMX-512A
Connector in/out:	XLR4
Max cable run:	60m / 200'
Cooling system:	Forced air
Construction:	Black anodised aluminium extrusion
Colour:	Black as standard. Also available in 8 other colours at an extra cost - see ordering information 4
LED cells:	4
LEDs per cell:	3 x RGBA single colour output
Total LEDs:	48
Control modes:	HSI, RGBA, RGB (*Magic Amber), RGBI (*Magic Amber) & stand-alone
Variable effects engine:	Yes
Effects parameters:	Colour spread, scroll, grouping, step, strobe, colour roll, speed, fade (up/down) & resolution
Lumen output:	Red 266 lumen Green 445 lumen Blue 56 lumen Amber 242 lumen White 532 lumen
CRI:	90
Optics:	Specialised close focus lens
Beam angle:	25° approx. (optional beam kits available, see website)
Beam distribution:	Asymmetrical direct illumination
CCT:	Adjustable 1,000 – 10,000K
Lamp life:	L70 up to 50,000 hours
IP rating:	IP20
Built-in hardware:	Interlocking system & quick release catches for connecting as battens. 2 x M10 nuts. See Accessories list below for other options
Approvals:	EN55103-1 & 2, IEC60950



[www.chroma-q.com](http://www.chroma-q.com)



**HQ, UK & International Sales**  
A.C. Entertainment Technologies Ltd.  
Tel: +44 (0)1494 446000  
Fax: +44 (0)1494 461024  
sales@ac-et.com  
www.ac-et.com

**Northern UK Sales**  
A.C. Entertainment Technologies Ltd.  
Tel: 0113 255 7666  
Fax: 0113 255 7676  
acnorth@ac-et.com  
www.ac-et.com

**North American Sales**  
A.C. Lighting Inc.  
Tel: 416-255-9494  
Fax: 416-255-3514  
northamerica@aclighting.com  
www.aclighting.com

**Asian Sales**  
A.C. Lighting Asia KK  
Tel: +81 (0)48-475-9377  
Fax: +81 (0)48-475-9355  
sales@aclighting.jp  
www.aclighting.jp

All Chroma-Q LED products are licensed by Color Kinetics. Chroma-Q and all associated product names are recognised trademarks, for more information visit [www.chroma-q.com/trademarks](http://www.chroma-q.com/trademarks). The rights and ownership of all trademarks are recognised. The information contained herein is correct at the time of printing, however as we are constantly refining our product range we reserve the right to change the specification without notice. EGOE.



# Chroma-Q™ Color Block 2™ LED Fixture

**Part No:  
CHCB4M2**

## S P E C I F I C A T I O N S H E E T

**V 1.3**

### ORDERING INFORMATION

**Model**

Chroma-Q Color Block 2 - black  
 Chroma-Q Color Block 2 - pewter  
 Chroma-Q Color Block 2 - light bronze  
 Chroma-Q Color Block 2 - gold  
 Chroma-Q Color Block 2 - champagne  
 Chroma-Q Color Block 2 - red  
 Chroma-Q Color Block 2 - green  
 Chroma-Q Color Block 2 - blue  
 Chroma-Q Color Block 2 - polished mirror

**Part No**

CHCB4M2  
 CHCB4M2-1  
 CHCB4M2-2  
 CHCB4M2-3  
 CHCB4M2-4  
 CHCB4M2-5  
 CHCB4M2-6  
 CHCB4M2-7  
 CHCB4M2-8

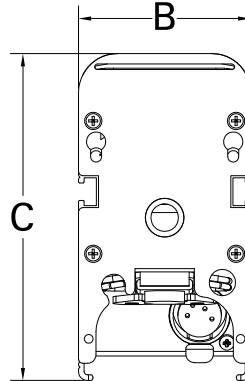
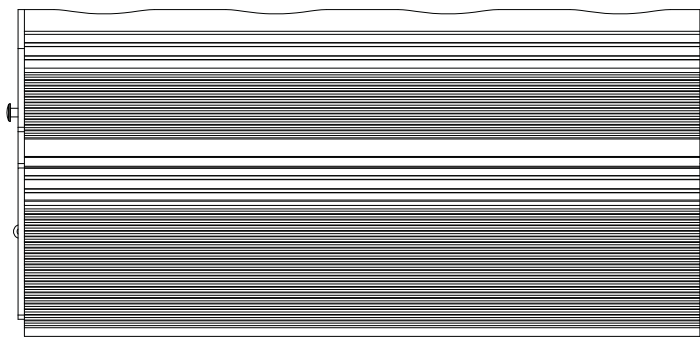
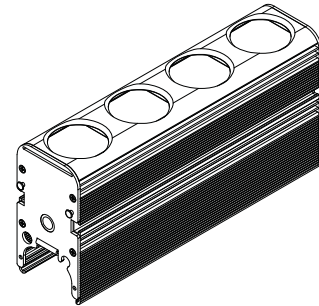
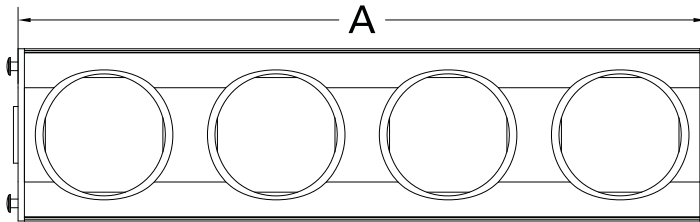
### ACCESSORIES

**Model**

Chroma-Q PSU for up to 5 units  
 Chroma-Q PSU for up to 30 units  
 Yoke / floor kit for single unit  
 Yoke attachment  
 Batten bracket kit for up to 5 units  
 Blinder frame for 4 units  
 250mm / 9.8" LED pipe (single unit)  
 1.3m / 51.2" LED pipe (5 way batten)  
 Hinge kit  
 Wall bracket for single unit  
 Single link cable for use in battens  
 Other cable lengths available ('x' is length in m)

**Part No**

CHCBPSU05  
 CHCBPSU30  
 CHCBCY  
 CHCBSY  
 CHCBBB  
 CHCBBF4  
 CHCBLP250  
 CHCBLP1300  
 CHCBHP  
 CHCBWB  
 MUCX4SDP-0.22  
 MUCX4SDP-x



\* Magic Amber is the term used for the unit's ability to bring in amber when mixing colours that require it.

  
[www.chroma-q.com](http://www.chroma-q.com)



**HQ, UK & International Sales**  
 A.C. Entertainment Technologies Ltd.  
 Tel: +44 (0)1494 446000  
 Fax: +44 (0)1494 461024  
 sales@ac-et.com  
 www.ac-et.com

**Northern UK Sales**  
 A.C. Entertainment Technologies Ltd.  
 Tel: 0113 255 7666  
 Fax: 0113 255 7676  
 acnorth@ac-et.com  
 www.ac-et.com

**North American Sales**  
 A.C. Lighting Inc.  
 Tel: 416-255-9494  
 Fax: 416-255-3514  
 northamerica@aclighting.com  
 www.aclighting.com

**Asian Sales**  
 A.C. Lighting Asia KK  
 Tel: +81 (0)48-475-9377  
 Fax: +81 (0)48-475-9355  
 sales@aclighting.jp  
 www.aclighting.jp

All Chroma-Q LED products are licensed by Color Kinetics. Chroma-Q and all associated product names are recognised trademarks, for more information visit [www.chroma-q.com/trademarks](http://www.chroma-q.com/trademarks). The rights and ownership of all trademarks are recognised. The information contained herein is correct at the time of printing, however as we are constantly refining our product range we reserve the right to change the specification without notice. EGOE.