

Building on the market success of the original Impression fixture, and a request for 'more, more, more', GLP have developed the impression XL

The impression XL uses almost three times as many K2 LED's as the original, with 240 in total, for unprecedented optical performance, both in terms of light output and in terms of color performance. This amount of light makes the XL perfect for longer throw applications, or where a higher level of ambient light is present, such as at daytime outdoor events, outside broadcasts and festivals.

The impression XL uses the same innovative design as its predecessor, featuring no bulky base unit and very low noise operation through the integrated heat sink, whilst its comprehensive menu system is easy to navigate allowing you to personalize the operation of each fixture.

Weighing in at just 23.5 kg / 52 lbs., the impression XL has connectors on its base for rigging with omega brackets and integrated sockets so that half couplers and similar can be mounted directly to the fixture.

The impression XL features flicker free dimming throughout its entire dimming range for all colors and works flawlessly in all camera and broadcast environments. The fixture comes fitted with a 10 degree lens as standard, with 25 degree and 40 degree interchangeable lenses available as optional extras.

Further accessories such as honeycomb fronts, flight cases and a 5 'flower' unit rigging option (a centerpiece like you would not believe) are also available.

The impression XL features feedback corrected movement with a 660 degree pan range and a 330 degree tilt range with 16 bit resolution and a speedy response due to its low weight.



THE IMPRESSION 240 IN BRIEF

LIGHT SOURCE

Additive color mixing
240 Luxeon K2 high power LED's
Average service life:
50,000 hours

AVAILABLE VERSIONS

RGB - 78 red, 84 green,
78 blue LED's
WWC - 156 warm white
(3200K), 84 cold white
(7200K)
WCC - 84 warm white (3200K),
156 cold white (7200K)
RGBWW - 50 red, 50 green, 56
blue, 54 warm
white (3200K), 30 cold
white (7200K)

OPTICAL SYSTEM

Highly efficient collimator
cluster
Interchangeable lens carrier
with 10° beam angle
(25° and 40° optional)
Wavelengths are optimized
for maximum visible color
gamut
Integrated spill ring
Optional honey-
comb available

MOVEMENT

8 or 16 bit resolution
selectable
660° Pan / 300° Tilt
Position feedback
High precision stepper
motor control

SHUTTER/ DIMMER

Strobe-effect with variable
speed between 1-10 flashes
per second, random strobe,
pulse effects
Continuous dimmer 0-100%

CONTROL

DMX-512 protocol
Three DMX modes avail-
able, using up to 14 channels
(standard RGB fixture)
Backlit graphic-LCD menu
with 2 illuminated buttons
Very quiet, temperature
controlled ventilation system
Convection cooling
possible if needed
Over-temperature protection
Internal color-presets

POWER SUPPLY

Power consumption:
1200 VA (Watt)
Power input:
Auto sensing 100-240
V AC, 50-60Hz
Fuse protection:
microfuse 6.3 x 32mm, T1.5A

CONNECTORS

DMX Data: XLR 3 pin in/out
DMX Data: XLR 5 pin in/out
Mains power:
Neutrik Powercon

OPERATING CONDITIONS

Maximum ambient temp.:
45°C / 113°F

MOUNTING OPTIONS

Omega bracket attachment
2 attachment points
for safety wire
Upright: tripod (supplied)
with brackets for ratchet belt
Hanging (vertical): M10 nut
with lockable installation
position for half coupler or
other clamp
Hanging (horizontal):
adjustable bar for sideways
truss installation (optional)

HOUSING COLORS

Black, white or silver as
standard
Other colors available upon
request

SHIPPING

Cardboard box
2 way tourpack (complete
with half couplers and ad-
ditional lenses) in flight case
4 way tourpack (complete
with half couplers and ad-
ditional lenses) in flight case

DIMENSIONS

Length x Width x Height
(head vertical):
200 x 550 x 515 mm / 7.8
x 21.6 x 20.2 inches

NET WEIGHT

23.5 kg / 51.8 lbs



impression[&]



www.impression.de

impression 90 & 240 XL
the first professional LED washlight

impression[&]
series

HIGH CAPACITY HEATSINK
with optimized airflow for low LED temperatures, silent operation and long service life

90 LUXEON LEDS
arranged in max. density allows a compact design with outstanding light output

STATE-OF-THE-ART
stepping motor control and low moving mass for quick and accurate movements. Proprietary LED driver technology with outstanding resolution and TV-compatible dimming

FLEXIBLE MOUNTING OPTIONS
supplemented by sophisticated accessories enable for quick rigging in all possible positions

impression – smaller, lighter, faster, brighter

Since its introduction, the impression has taken the world by storm and set a standard for LED wash lighting. Innovation rules in this fixture:

Smaller - with no base unit and coupled with its sleek design, the impression can be placed anywhere without being obtrusive. Its small size also means getting more lights packed into smaller truck spaces, reducing costs and impact.

Lighter - a weight of just 7.5 kg / 16 lbs. allows the impression to be mounted in many more places without having to sacrifice for a lower output fixture.

Faster - solid state LED's give instant lighting changes to match with video and its compact size and weight, the impression can move at incredible speeds too – 660 degrees of pan in just 2 seconds.

Brighter - 90 powerful K2 LED's ensure pure bright light in every version – RGB or white – with output levels exceeding that of 575W discharge fixtures.

As you would expect from GLP, quality is carried through the fixture at every stage. We put a lot of time and effort into ensuring that the quality of light in every impression is optimal in every unit, now and over time. Even color mixing, a soft edged beam, smooth dimming and precise accurate positioning are just some of the attributes that have set the impression apart from any competitors and earned it a Live Design award. We also ensure quality over time through selecting from a very narrow tolerance of LED's, so whether adding more fixtures to your stock or bringing in additional ones on a temporary basis, you are sure to have the same level of color and quality.

All units come as standard with 10 degree fixed beam optics, but both 25 degree and 40 degree lenses are available, along with other accessories such as honeycombs and protection domes for outdoor use. All versions are available with motorized pan and tilt or as static units if they just need to be locked off into position, or operated manually. There is even a recessed version of the impression available for mounting into applications where suspended ceilings or raised floors are used. All impression fixtures are available to purchase in a flight case direct from the factory. Small and compact, these cases provide ultimate protection for the impression and contain storage space for clamps, lenses, cables and other accessories.

THE IMPRESSION 90 IN BRIEF

LIGHT SOURCE

Additive color mixing
90 Luxeon K2 high power LED's
Average service life: 50,000 hours

AVAILABLE VERSIONS

RGB - 30 red, 30 green, 30 blue LED's
WCC - 30 warm white (3200K), 60 cold white (7200K), allow continuously adjustable color temp.
WWC - 60 warm white (3200K), 30 cold white (7200K), allow continuously adjustable color temp.
CCA - 60 cold white (7200K), 30 amber LED's
All versions available as either motorized or static fixture

RECESSED VERSION

Recessed version available for mounting in suspended ceilings
Also available as either motorized or static fixture

OPTICAL SYSTEM

Highly efficient collimator cluster
Interchangeable lens car-

rier with 10° beam angle (25° and 40° optional)
Wavelengths are optimized for maximum visible color gamut
Integrated spill ring

MOVEMENT

8 or 16 bit resolution selectable
Position feedback
Maximum speed: 660° pan in 2 seconds, 300° tilt in 1 second
High precision stepper motor control

SHUTTER/ DIMMER

Strobe-effect with variable speed between 1-10 flashes per second, random strobe, pulse effects
Continuous dimmer 0-100%

CONTROL

DMX-512 protocol
Three DMX modes available, using up to 14 channels
Backlit graphic-LCD menu with 4 illuminated buttons
Very quiet, temperature controlled ventilation system
Convection cooling

possible if needed
Over-temperature protection
Color calibration feature
Internal color-presets

POWER SUPPLY

Power consumption: 350 VA (Watt)
Power input: Auto sensing 100-240 V AC, 50-60Hz
Fuse protection: Micro-fuse 5x20mm, T 4A

CONNECTORS

DMX: XLR 3 pin
Mains voltage: Neutrik Powercon

OPERATING CONDITIONS

Maximum ambient temp.: 45°C / 113°F

MOUNTING OPTIONS

Omega bracket attachment
2 attachment points for safety wire
Upright: tripod (supplied) with brackets for ratchet belt
Hanging (vertical): M10 nut with lockable instal-

ation position for a half coupler or other clamp
Hanging (horizontal): adjustable bar for sideways truss installation (optional)

HOUSING COLORS

Black, white or silver as standard
Other colors available upon request

SHIPPING

Cardboard box
4 way tourpack (complete with half couplers and additional lens) in flight case
6 way tourpack (complete with half couplers and additional lens) in flight case

DIMENSIONS

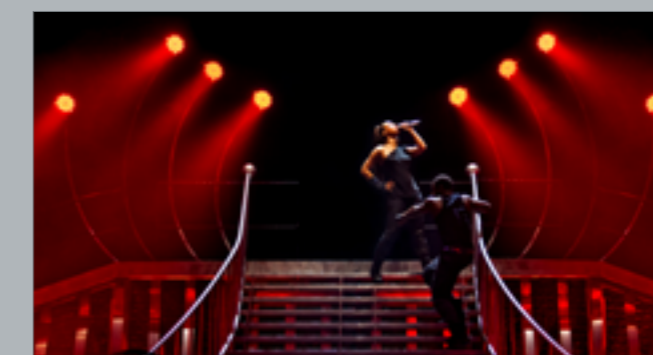
Length x Width x Height (head vertical): 145 x 340 x 370 mm / 5.7 x 13.4 x 14.6 inches

NET WEIGHT

7.5kg / 16.5 lbs.



Available versions



LD: Baz Halpin



LD: Rainer Becker